



# Cambridge Pre-U

---

**GEOGRAPHY**

**9768/01**

Paper 1 Global Environments

**For examination from 2020**

SPECIMEN INSERT

**1 hour 30 minutes**

---

**INFORMATION**

- This insert contains all the resources referred to in the questions.
- You may annotate this insert and use the blank spaces for planning. **Do not write your answers** on the insert.



This specimen paper has been updated for assessments from 2020. The specimen questions and mark schemes remain the same. The layout and wording of the front covers have been updated to reflect the new Cambridge International branding and to make instructions clearer for candidates.

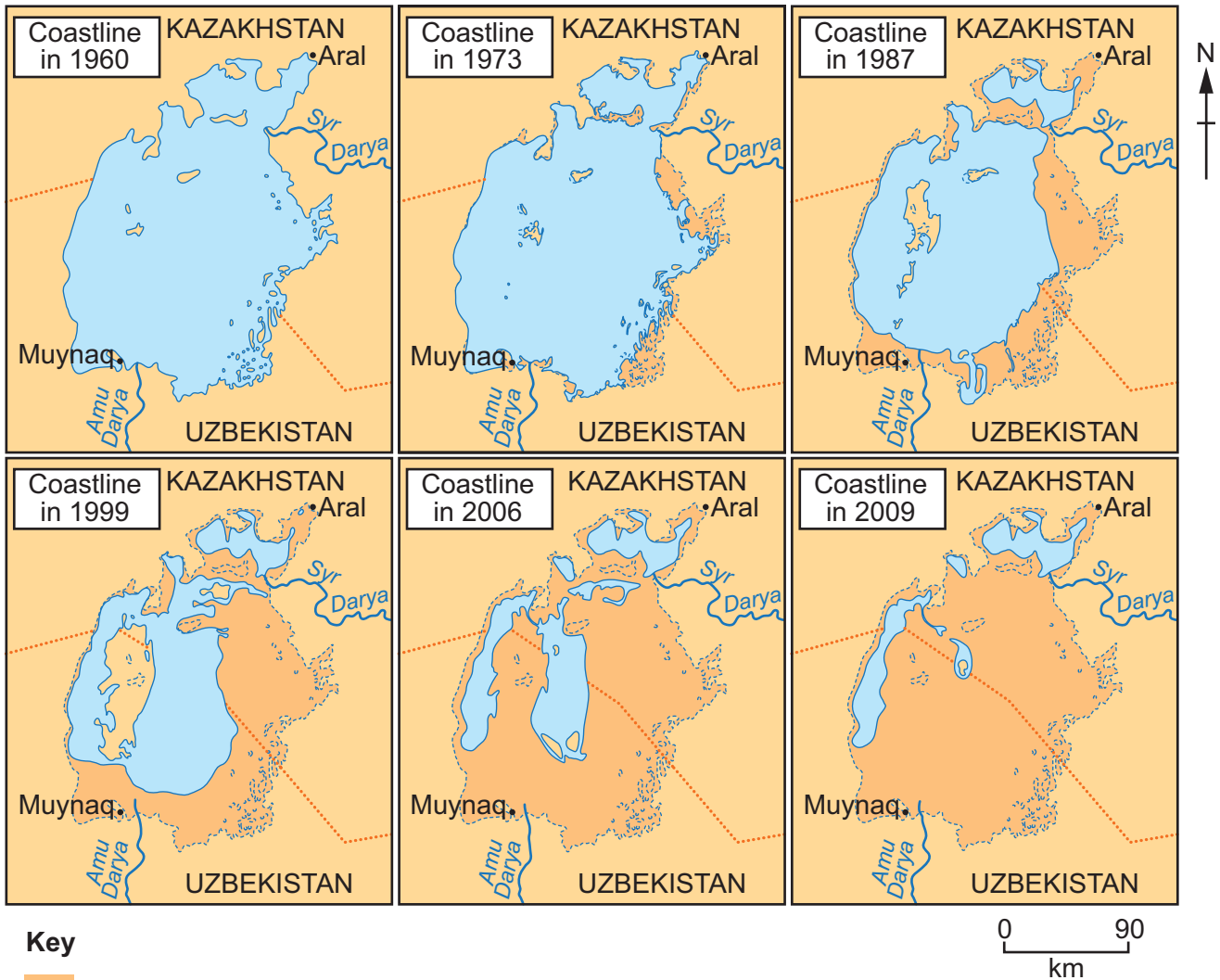
---

This syllabus is regulated for use in England, Wales and Northern Ireland as a Cambridge International Level 3 Pre-U Certificate.

This document has **10** pages. Blank pages are indicated.

Fig. 1A for Question 1

Changes to the surface area of the Aral Sea

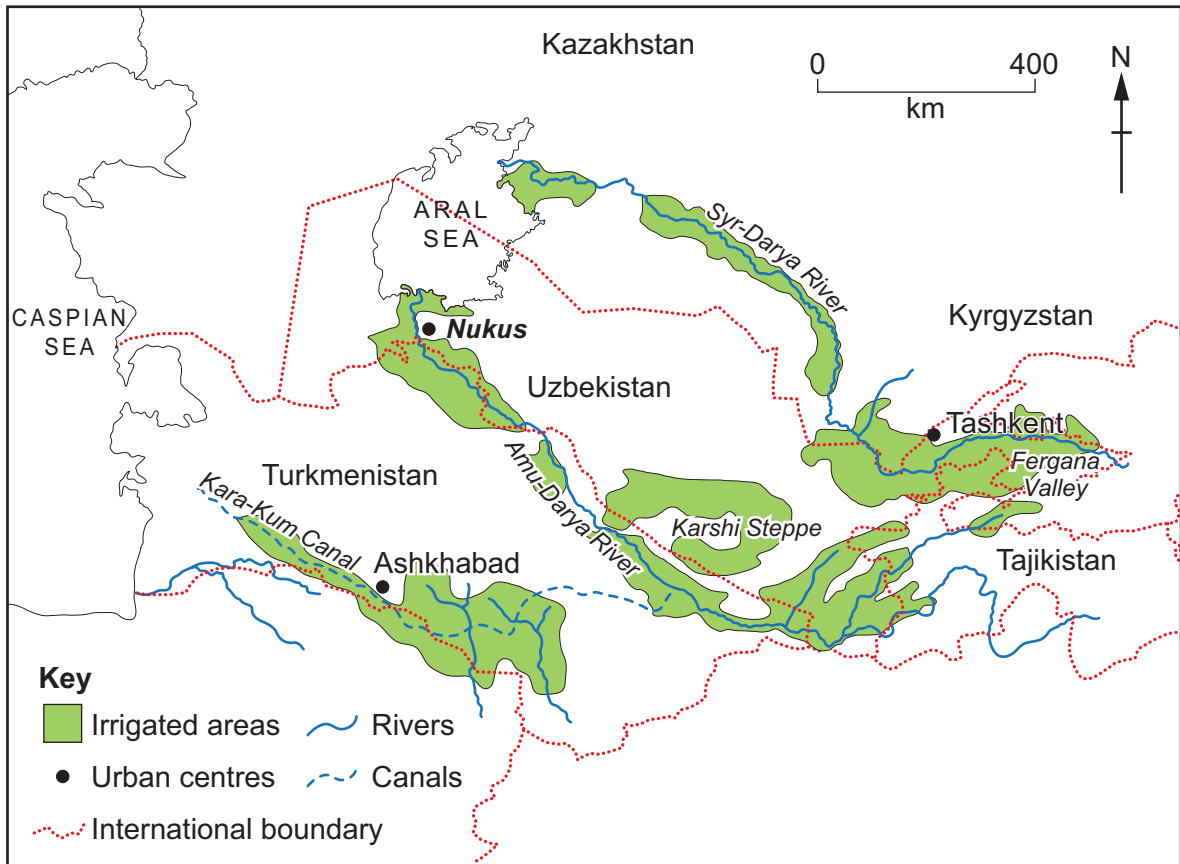


Key

- land submerged in 1960
- 1960 coastline
- international boundary

Fig. 1B for Question 1

The area surrounding the Aral Sea



Photograph A for Question 2

An area of glaciated upland, Snowdonia, North Wales

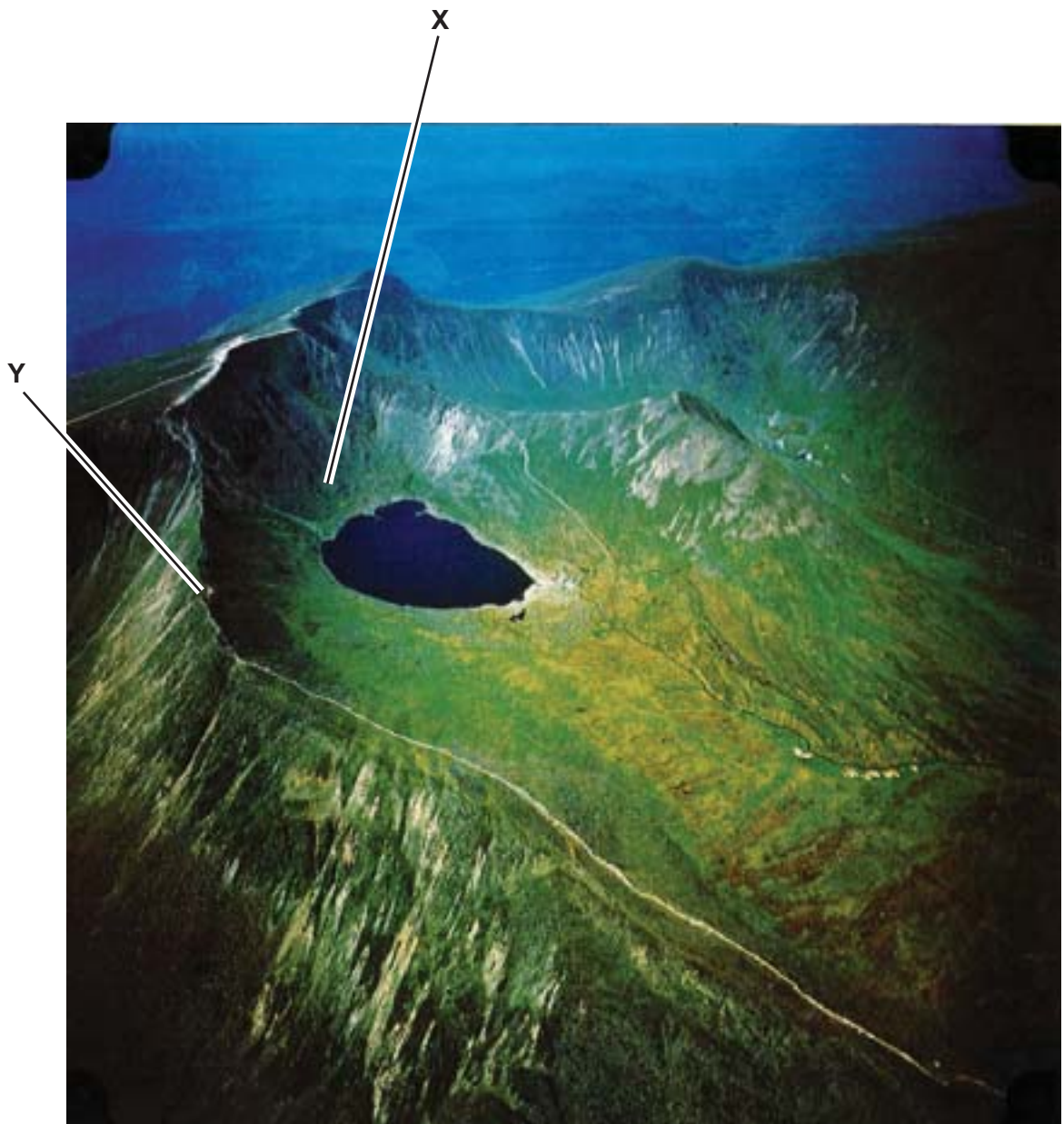




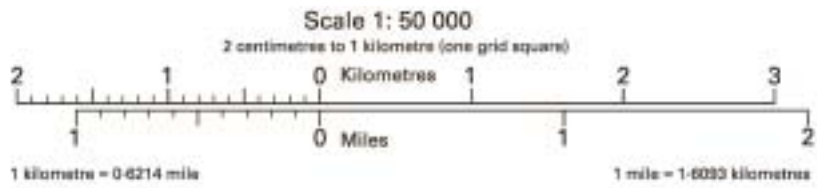


Fig. 2 for Question 3

An area of the Essex coastline, East Anglia, UK



Key for Fig. 2



**ROADS AND PATHS**

Not necessarily rights of way

- Secondary road
- Road generally more than 4m wide
- Path / Other road, drive or track

**TOURIST INFORMATION**

- Camp site / caravan site
- Picnic site
- Telephone, public / roadside assistance

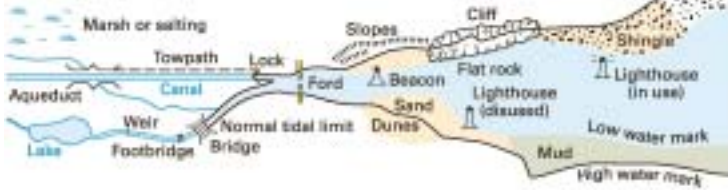
**RAILWAYS**

- Track multiple or single
- Tunnel, cuttings
- Viaduct, embankment

**LAND FEATURES**

- Buildings
- Place of worship
- Triangulation pillar
- Non-coniferous wood
- Mixed wood
- Orchard

**WATER FEATURES**

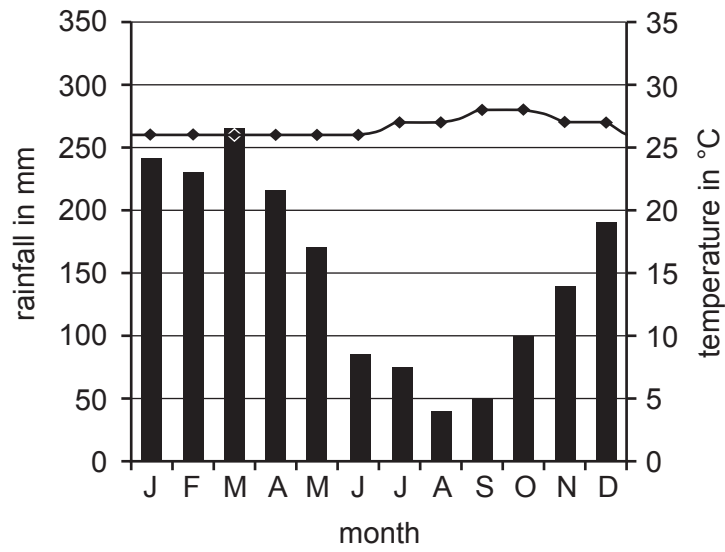


**ABBREVIATIONS**

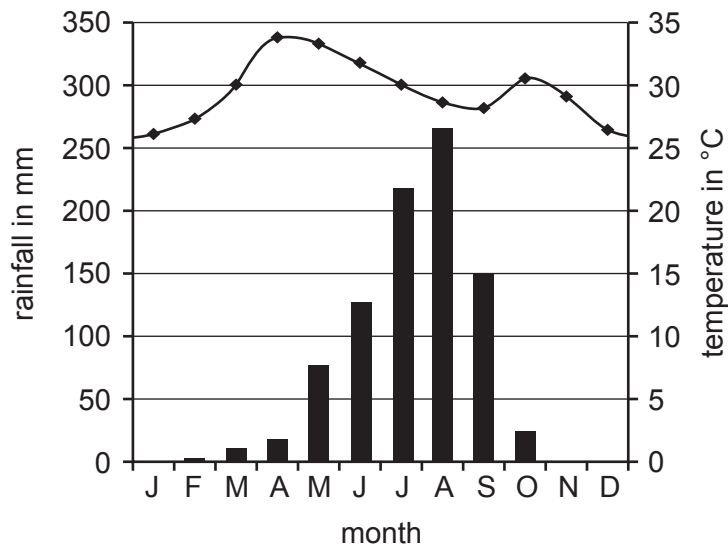
- P Post office
- PC Public convenience (in rural areas)
- PH Public house

## Figs 3A and 3B for Question 4

## Annual climate Manaus, Brazil (latitude 3°S)



## Annual climate Kano, Nigeria (latitude 12°N)





**Fig. 4 and Table 1 for Question 5****An extract from Chapter 1 of the *Grapes of Wrath* by John Steinbeck**

In the water-cut gullies [of Oklahoma] the earth dusted down in dry little streams ... And as the sharp sun struck day after day, the leaves of the young corn became less stiff and erect ... and each leaf tilted downwards. Then it was June, and the sun shone more fiercely ...

When June was half gone, the big clouds moved up out of Texas and the Gulf ... The rainheads dropped a little spattering and hurried on to some other country. Behind them the sky was pale again the sun flared ...

A day went by and the wind increased ... and the dust lifted up out of the fields and drove gray plumes into the air ... The wind raced faster over the land ... and the corn fought the wind until the roots were freed ... and then each stalk settled wearily sideways ...

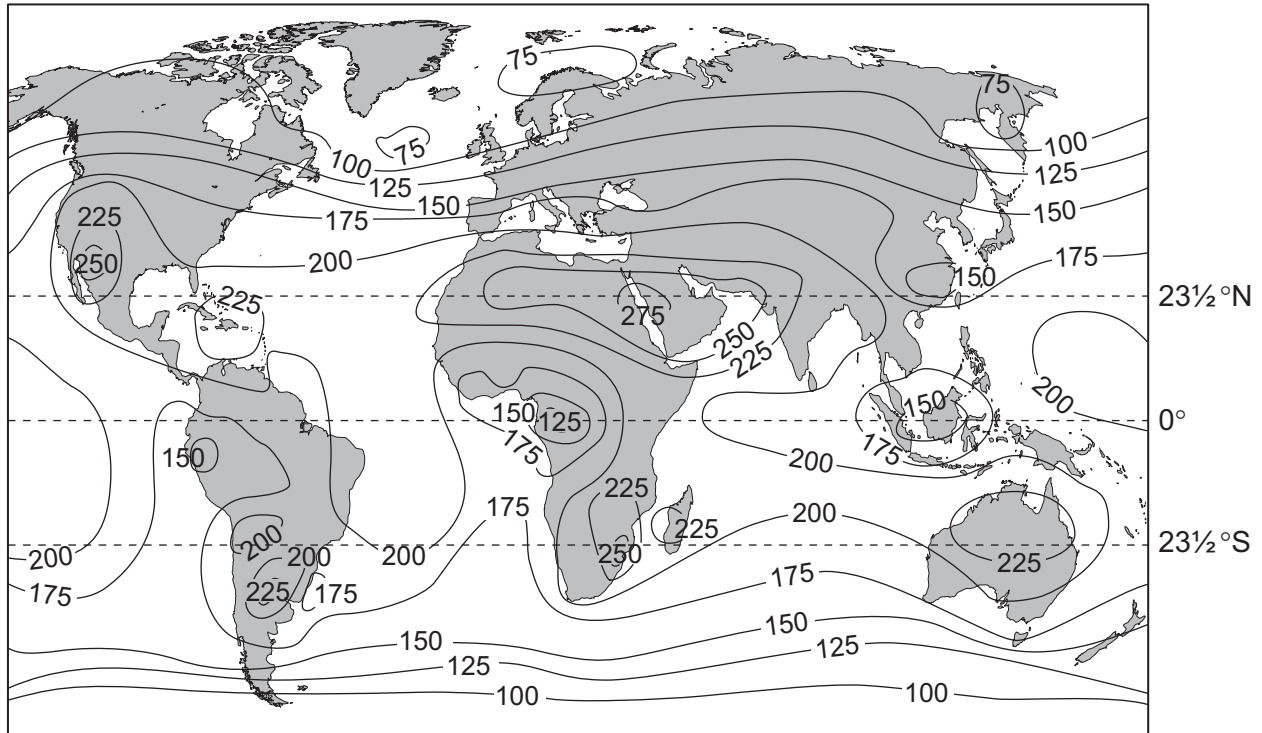
All day the dust sifted down from the sky ... An even blanket covered the earth. It settled on the corn, piled up on the tops of the fence posts, piled up on the wires ... Men stood by their fences and looked at the ruined corn, drying fast now, only a little green showing through the film of dust.

Dust storm frequency for the decade 1932 to 1941 in the American Mid-West

<b>Frequency of dust storms with visibility &lt;1.6 km</b>	
1932	14
1933	38
1934	22
1935	40
1936	68
1937	72
1938	61
1939	30
1940	17
1941	17

Fig. 5 for Question 6

## The global distribution of average annual solar radiation

**Key**

– 200 – Insolation values as measured at ground level in watts per square metre

**Copyright Acknowledgements:**

- Question 1 Figure 1a      © <http://mappery.com/maps/Aral-Sea-historic-coastline-Map.gif>.  
 Question 2 Photograph A   © Aerofilms; <http://www.english-heritage.org.uk/professional/archives-and-collections/nmr/aarchives/photographs/aerofilms/>.  
 Question 3 Figure 2      © *An area of the Essex coastline, East Anglia, UK*; OS Landranger 169; Eastings 18-29, Northings 18-29; Ordnance Survey.  
 Question 5 Figure 4      © adapted: John Steinbeck; *The Grapes of Wrath*; Penguin Books Ltd; 1939.  
 Question 6 Figure 5      © Roger Barry & Richard Chorley; *Atmosphere, weather and climate*; Methuen Publishing; 1987.

Permission to reproduce items where third-party owned material protected by copyright is included has been sought and cleared where possible. Every reasonable effort has been made by the publisher (UCLES) to trace copyright holders, but if any items requiring clearance have unwittingly been included, the publisher will be pleased to make amends at the earliest possible opportunity.

Cambridge Assessment International Education is part of the Cambridge Assessment Group. Cambridge Assessment is the brand name of the University of Cambridge Local Examinations Syndicate (UCLES), which itself is a department of the University of Cambridge.